

26th – 28th November 2024, *IEML, Greater Noida, Delhi NCR*

Sponsorship Brochure

**At the
heart of
Pharma**





INTRODUCTION

At the heart of Pharma

CPHI 
India

PMEC 
India

India's Booming Pharmaceutical Market

A future powerhouse for R&D and manufacturers of pharmaceuticals



World's largest
provider of
generic medicines



200+
Largest number of US FDA
approved pharmaceutical
units outside US



USD2.9bn
Imports growth
by 2024



70-80%
of branded generics in
the retail market

Exports to more than 200 countries. Top destinations:



1. USA



5. France



2. UK



6. The Netherlands



3. Australia



7. Canada



4. Germany



8. Belgium

Strengths

- **Sizeable and strong generic drug market**, largely owing to the low-income population and government support
- India will continue to attract **multinational drugmaker investment**, underpinning its long-term growth potential, with a **large and fast-growing population**
- **Significant market growth potential**, with a large and fast-growing population.
- A **global leader** in the production of **quality generic medicines**

Opportunities

1 **Demand for low-cost drugs**

2 **Continuing expansion**

...of the healthcare sector and rising cost awareness.

3 **Generic medicine segment**

...to drive prescription medicine sales growth as government initiatives will boost generic medicine use.

4 **Growing medical demands**

India will continue to rely on pharmaceutical imports - particularly high-value medicines - to meet its growing medical demands.

5 **Rapid population growth**

...and a gradually ageing population represents potential for pharmaceutical firms to expand, with the emergence of diabetes, cancer and cardiovascular diseases driving the growth of higher value prescription medicines.

Showcase your products & services to India and Asia's leading decision makers.

Where the global end-to-end Pharma community gathers!

JOIN THE LEADING EVENT FOR THE PHARMA INDUSTRY

Smart Event

The event for the Pharma industry is back! This year, CPHI & PMEC India has evolved into a smart event, which combines the interactive features of an in-person event with online features to help you connect for an extended period of time.

Uniting thousands of pharma suppliers and buyers across the full supply chain, CPHI & PMEC India is the best platform to source, connect and learn within the industry.

ONE EVENT, MORE OPTIONS

More Flexibility >>

Pre-Connect >>

More Learning >>

More Time >>

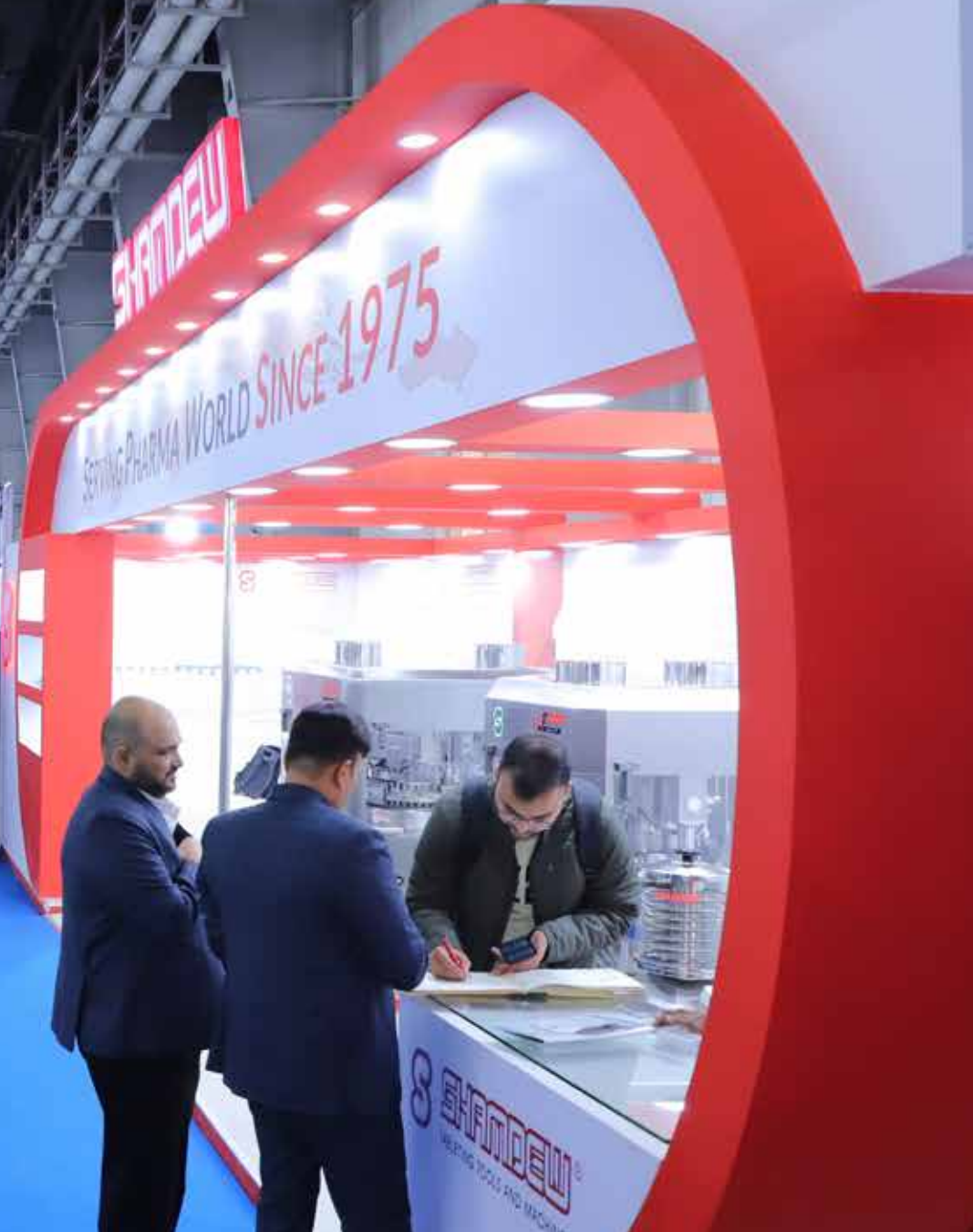
Exhibitors In
Hall 15A and
Registration
Hall

Exhibiting Opportunities

Join us!

CPHI 
India

PMEC 
India



VIRTUAL EXHIBITION OPTION

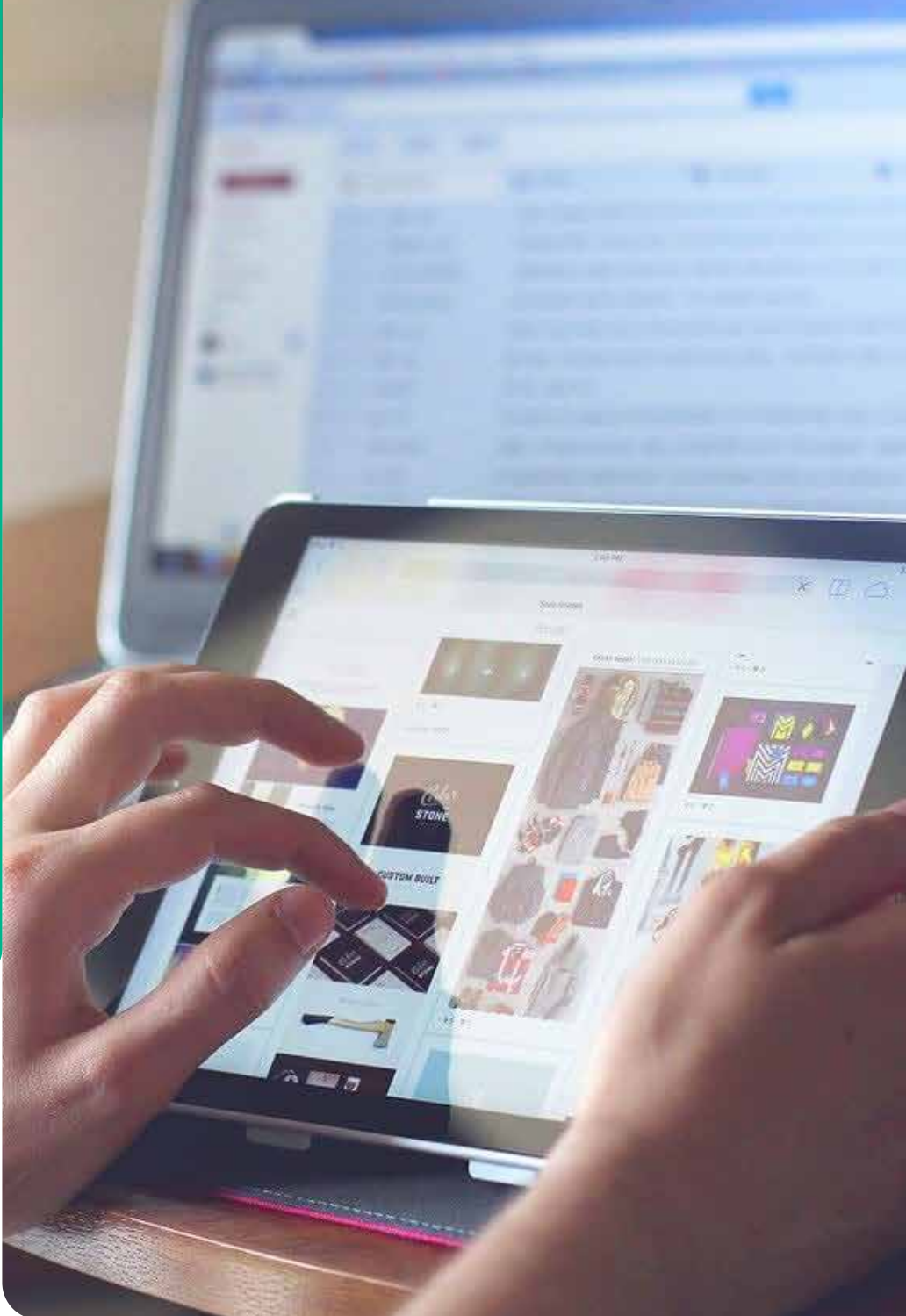
Can't make it to CPHI & PMEC India 2024? Don't worry, you can create a virtual profile. This will allow you to network during the show, so you won't miss out!

WHAT ARE THE BENEFITS?

- Exclusive company page with profile, products, images/videos on the Online Event
- An AI-driven matchmaking platform enabling you to find new partners
- Unlimited networking for 2 company representatives
- Ability to pre-schedule meetings with buyers of your choice both pre-show and onsite
- On-demand content & insights exclusive to the event

COST: USD 4,500 / INR 3,50,000

***Additional fees apply for each new representative: USD 625 / INR 50,000**



Exclusive Sponsorship

Stand Out Opportunities





REGISTRATION & WELCOME PARTNER

Brand Awareness:

The company logo will be displayed as our Registration & Welcome Partner on the CPHI & PMEC India event Homepage.

- Company banner on the footer of registration pages
- Company banner on the registration confirmation email

Marketing Promotions:

- Social media post highlighting company as Registration & Welcome Partner
- Integrated within our marketing campaigns during CPHI & PMEC India and highlighted as the official 'Registration & Welcome Partner'

Onsite Branding:

- Branding at Main Registration Area at Registration Hall (60' x 20')
- This effective branding medium will ensure that your brand is not missed. Standing out at the main registration area, this site will give you the edge over your competitors.

**Registration & Welcome Partner Package Cost:
INR 18,80,000 / USD 23,500**

Exclusive to CPHI & PMEC India 2024



VISITOR BADGE PARTNER

Displaying your brand logo on visitor badges is one of the premium opportunities at the event

Showcase your brand on our Visitor Badges which will be visible to all our attendees and will be their sole entry pass to the exhibition floor and all access areas.

- Company logo displayed as 'VISITOR BADGE PARTNER' on event homepage
- 1 x social media post highlighting company as official 'VISITOR BADGE PARTNER'



Badge Partner Cost:
INR 20,00,000 / USD 22,000

Imp Note: To honor visitor's personal safety discretion, wearing a badge is optional.



LANYARD PARTNER

Displaying your brand logo on visitor lanyards is one of the premium opportunities at the event

Sponsor provided logo and artwork placed on badge
Lanyards are provided for all onsite printed badges

This is an essential item that every visitor would want to carry with them for the entire duration of the exhibition.

**Lanyard Partner Cost:
INR 10,00,000 / USD 11,000**

Separate for CPHI and PMEC



**Imp Note: to honor visitor's personal safety discretion,
wearing a badge/lanyard is optional.**

SHOW BAGS PARTNER



Show bags are distributed among the event's exhibitors and visitors, adding much greater visibility to your brand.

Exclusive sponsored Show Bags provided to each attendee onsite while supplies last.

Only one side will carry sponsor branding and the other side will have show branding.

Bag Partner Cost:
INR 11,00,000 / USD 13,750

Separate for CPHI and PMEC



Imp Note: This image is for sample purposes only.

EXHIBITOR NIGHT – RECEPTION SPONSOR



A great opportunity to gain visibility for your brand in front of a captive, targeted audience

A Unique Opportunity:

- Headline sponsorship of the networking event for 500 attendees taking place at the CPHI India

Boost Your Brand:

- Your organization logo included on reception invite; including on-site signage, in email campaigns promoting the event & social media posts
- Meet top pharma industry professionals and enjoy high level networking with the key decision makers
- Invite your clients and partners - you'll receive 50 event invites to the event

Onsite Branding:

- Company logo on invite
- 4 x standee at reception area
- Table-top branding

INR 15,00,000 / USD 18,750

SUSTAINABILITY PARTNER



Many key players in the pharmaceutical industry have committed to environmental stewardship across their production lifecycle; from discovery right through to disposal. By minimizing the environmental impact, the pharmaceutical industry is becoming a driver of positive change towards a sustainable future.

If your company is committed towards sustainability, it is time to showcase your work to the industry & lead by example.

Boost Your Brand:

- Your company logo highlighted as Sustainability Partner on the backdrop of sustainability lounge
- Your company logo will be featured on the sustainable giveaways provided to lounge attendees
- Your company logo highlighted as Sustainability Partner on the CPHI India website & select marketing collaterals
- 2 min video on the CPHI TV during show days (played 6 times per day)
- Full page advt in CPHI PMEC digital catalogue highlighting your sustainability work

Cost: INR 7,50,000 / USD 9,500

Onsite Branding

Printed & Digital Signage

CPHI
India

PMEC
India



VENUE ENTRANCE – GATE 1



Description

Be visible! Expose your brand right at the main entrance – Gate 1 of the venue. This gate is used maximum by exhibitors and visitors to enter and exit the venue and guarantees high visibility to your brand.

<p>Location : A1 Size : 20' x 20' Cost : INR 5,25,000 / USD 7,000</p>	<p>Location : A3 Size : 16' x 20' Cost : INR 5,25,000 / USD 7,000</p>	<p>Location : A4 Size : 20' x 20' Cost : INR 5,25,000 / USD 7,000</p>	<p>Location : A6 Size : 28' x 10' Cost : INR 5,25,000 / USD 7,000</p>
<p>Location : A7 Size : 30' x 10' Cost : INR 4,20,000 / USD 5,600</p>	<p>Location : A8 Size : 20' x 20' Cost : INR 3,15,000 / USD 4,200</p>	<p>Location : A9 Size : 20' x 20' Cost : INR 3,15,000 / USD 4,200</p>	<p>Location : A10 Size : 20' x 20' Cost : INR 3,15,000 / USD 4,200</p>

WELCOME HOARDING



Description

A perfect way to greet visitors and promote your brand!

Located just as you enter the venue from Gate 1 (main entrance gate to the venue), this branding will not be missed by visitors and exhibitors entering the venue and ensure maximum exposure to your brand.

Size: 20' x 10'

Cost: INR 3,50,000 / USD 4,375

PATHWAY HOARDING



Description

Your company / brand will appear on the hoardings placed on the pathway at strategic locations. These pathways connecting different halls see thousands of visitors throughout the 3 days.

Size: 10' x 10'

Cost: INR 100,000 / USD 1,300

POLE BUNTINGS



Description

Pole buntings are strategically located on the pathway outside the central foyer area. These buntings will be visible to thousands of visitors throughout the 3 days.

Size: 2' x 7'

Cost: INR 50,000 / USD 670 (for 2 buntings)

CUBOIDS

Description

Positioned at strategic locations throughout the venue. Your company branding will be placed on all 4 sides of the cuboids providing maximum visibility and exposure to your brand.

Size: 4' x 8'

Cost: INR 1,60,000 / USD 2,000



PREMIUM HOARDING ON EXPO MART FRONT WALL



Description

Branding that cannot be missed!

Grab the attention of visitors with these branding options. Located soon after the entrance gate, these hoardings are sure to get your brand noticed before your competitors.

Size: 20' x 50'

Cost: INR 5,25,000 / USD 7,000

GLASS HOARDING ON CENTRAL FOYER WALL



Description

Maximize exposure to your brand!

Located just above the entrance to CPHI Halls 1-8, be sure to catch the attention of visitors from a distance.

Size: 16' x 23'

Cost: INR 5,25,000 / USD 7,000

Locations | SIZE | Status

- H4 : 16' x 23'
- H5 : 16' x 23'
- H6 : 16' x 23'
- H9 : 16' x 23'
- H10 : 16' x 23'
- H11 : 16' x 23'
- H12 : 16' x 23'
- H13 : 16' x 23'

HANGING BANNER IN CFB AREA



Description

These effective branding mediums are located at the main registration area in the central foyer. Provides high visibility to all the visitors and exhibitors entering the venue.

Size: 3' x 15'

Cost: INR 75,000 / USD 950

PILLAR BRANDING (OUTSIDE HALL 1-3-5-7)



Description

These effective branding mediums are available inside the venue, and they guarantee that your brand will grab visitor attention. Branding on 2 sides.

Locations

- Opposite Hall 1 entry : 1
- Opposite Hall 1 exit : 1
- Opposite Hall 3 entry : 1
- Opposite Hall 3 exit : 1
- Opposite Hall 5 entry : 1
- Opposite Hall 5 exit : 1
- Opposite Hall 7 entry : 1

Size: 1920MM (Width) x 600MM (Height)
Cost: INR 75,000 / USD 940

RAILING BANNER (OUTSIDE HALL 1-3-5-7)



Description

These effective branding mediums are available in the lobby area outside Halls 1-3-5-7, and they guarantee that your brand will grab visitor attention.

Size: 8' x 6'

Cost: INR 1,05,000 / USD 1,400

PREMIUM HOARDINGS ON HALL 9 & 10



Description

Branding that cannot be missed! These effective branding mediums are available at the entrance of Hall 9 and they guarantee that your brand will grab visitor attention and provide great visibility.

Location: PM15
Size : 66' x 30'
Cost : INR 6,50,000 / USD 8,200

Location: PM17A
Size : 35' x 30'
Cost : INR 4,50,000 / USD 5,625

Location: PM17B
Size : 35' x 30'
Cost : INR 4,50,000 / USD 5,625

Location: PM18
Size : 30' x 30'
Cost : INR 4,50,000 / USD 5,625

HOARDINGS ON HALL 9 BOTTOM WALL



Description

These effective branding mediums are available towards the bottom, near the entrance of Hall 9 and they guarantee your brand will grab visitor attention and provide good visibility.

Location: PM20

Size : 35' x 16'

Cost : INR 4,00,000 / USD 5,100

Location: PM21A

Size : 35' x 16

Cost : INR 4,00,000 / USD 5,100

Location: PM21B

Size : 40' x 16'

Cost : INR 4,00,000 / USD 5,100

PREMIUM HOARDING ON HALL 9 SIDE WALL - FROM GATE 3 & 4



Description

These hoardings are available on the side wall of Hall 9, with great visibility to visitors coming in from Gate 3 & 4 also crossing over from the CPHI halls. Grab visitor attention before any of your competitors!

Size: 40' x 30'

Cost: INR 4,00,000 / USD 5,100

HOARDING ON ESCALATOR WALL NEAR HALL – FROM GATE 3 & 4



Description

This is a new hoarding – available on the escalator back side wall near Hall 9, with huge visibility to visitors coming in from Gate 3 & 4. Grab visitors' attention before any of your competitors!

Size: 19' x 47'

Cost: INR 4,00,000 / USD 5,100

HOARDING ON ESCALATOR WALL NEAR HALL 9

Description

This hoarding is available on the escalator wall near Hall 9, with good visibility for visitors. Grab this opportunity before any of your competitors!

Size: 18' x 12'

Cost: INR 2,50,000 / USD 3,200



PREMIUM HOARDING ON HALL 14 & 15



Description

These effective branding mediums are available at the entrance of Halls 14 & 15, and they guarantee that your brand will grab visitor attention and provide good visibility.

Location: PM23

Size : 66' x 30'

Cost : INR 6,50,000 / USD 8,200

Location: PM25A

Size : 48' x 30'

Cost : INR 5,25,000 / USD 7,000

Location: PM25B

Size : 48' x 30'

Cost : INR 5,25,000 / USD 7,000

HOARDINGS ON SKYWALK CONNECTING CPHI & PMEC HALLS



Description

Prominent hoardings available on the Skywalk connecting Hall 8 and 9. Positioned at strategic location with great visibility to visitors coming in from Gate 3 & 4 and also to visitors crossing over from CPHI and PMEC halls. Grab visitors' attention and stand out from your competitors!

Size : 20' x 15' Each
Pack of 4: Side Facing Hall No. 7 & 9
Cost : INR 12,00,000 / USD 15,000

Size : 20' x 15' Each
Pack of 4: Side Facing Gate No. 3 & 4
Cost : INR 12,00,000 / USD 12,500

HOARDING ON CPHI HALLS – VISIBLE FROM PMEC AREA



Description

These hoardings are available on the wall of CPHI Halls 7 & 8, with great visibility to visitors gathered at PMEC SQUARE and crossing over. Grab visitor attention before any of your competitors!

Size: 25' x 25'

Cost: INR 4,00,000 / USD 5,100

BRANDED FOOD TRUCKS



Description

The way to people's hearts is through their stomachs. Unlock the potential of your brand with our exclusive branding opportunity on food trucks. Your company branding will be displayed on eye-catching mobile eateries, drawing the attention of event attendees, and creating lasting impressions. With this unique marketing avenue, your brand will be showcased to a diverse audience while they indulge in delicious culinary offerings. Don't miss out on this chance to elevate your brand presence and connect with attendees in a memorable and impactful way.

Size: 16 x 9 Ratio

Cost: INR 4,50,000 + tax per truck / USD 5625 + tax per truck



In-Hall Branding

Printed Signage

CPHI 

B-08





INSIDE HALL BUNTING

Description

Cement your brand with highly visible hall buntings placed strategically between the aisles. Ensure visitors' attention towards your brand while they browse around the hall.

Size for CPHI halls: 4' x 6'

Size for PMEC Halls: 4' x 14'

Cost: INR 35,000 / USD 450

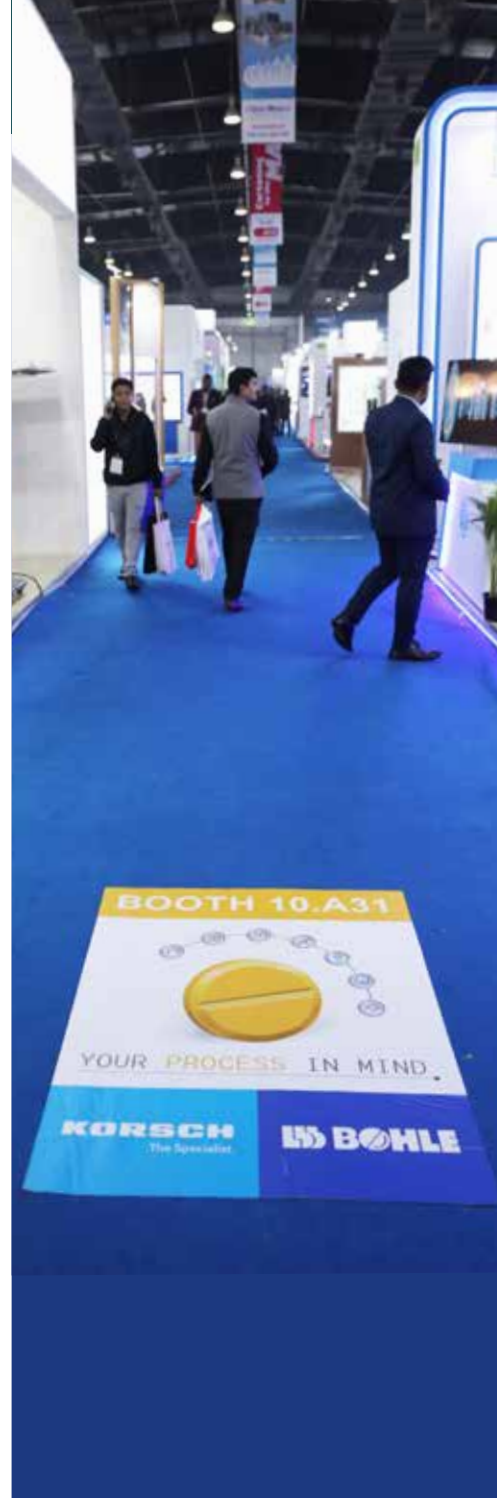
WALKWAY STICKERS

Description

Your branding will appear on the show floor (carpet) with the company logo, stand number and directions. This is the most economic & innovative mode of attracting / inviting visitors to your stand

Size: 3' x 4'

Cost: INR 25,000 / USD 325



Other Opportunities

Join us!

CPHI
India

PMEC
India



SHOW CATALOGUE & EVENT GUIDE

Description

Event Guide (Printed)

Grab the opportunity and place your company ad in the Event guide! Event Guide will be printed and distributed to everyone who attends the show.

PRICE

Back Cover	: INR 2,00,000	USD 2,500
Inside Front Cover	: INR 1,69,000	USD 2,100
Inside Back Cover	: INR 1,69,000	USD 2,100
Full Page Color Advertisement	: INR 77,000	USD 965
Footer on Cover	: INR 60,500	USD 760

Show Catalogue (Digital)

Advertising in the leading directory for the pharmaceutical industry will give you the opportunity to convey your message to more than 50,000 top-level pharmaceutical professionals not only during the show, but also through the year. Stand out among 1700+ suppliers and highlight your company profile with an advertisement here.

PRICE

Footer on Cover Page	: INR 1,30,000	USD 1,650
Back Cover	: INR 1,54,000	USD 1,950
Inside Front Cover	: INR 1,54,000	USD 1,950
Full Page Color Advertisement.	: INR 69,000	USD 870

Footer on cover page | Combo package | Back cover/Inside front positions are available at special price. Please get in touch with us.



SHOW BAG INSERTS

Description

Draw traffic to your booth by giving your company's message out to all registered attendees using an insert in the Official Show Bag. Production and shipping costs of inserts are not included.

Size: A4 (not more than 100GSM)

Qty: 10,000

Cost: INR 1,00,000 / USD 1350



WATER DISPENSER KIOSKS

Description

Water kiosks shall be present at all halls and strategic locations. Your company logo, branding, and audiovisuals will run on the LED screen of the Water Kiosks and will provide maximum visibility.

Through this, we intend to support sustainability by avoiding the distribution of plastic water bottles. Join the cause

Size: 42-inch LED Screen
Cost: INR 75,000 | USD 1,000



MOBILE CHARGING STATION

Description

A meeting point for visitors to meet, interact and use the plug-points for mobile charging. Your company logo will appear on the mobile charging station.

Size: 3' x 4'

Cost: INR 1,00,000 / USD 1250 (Per station)



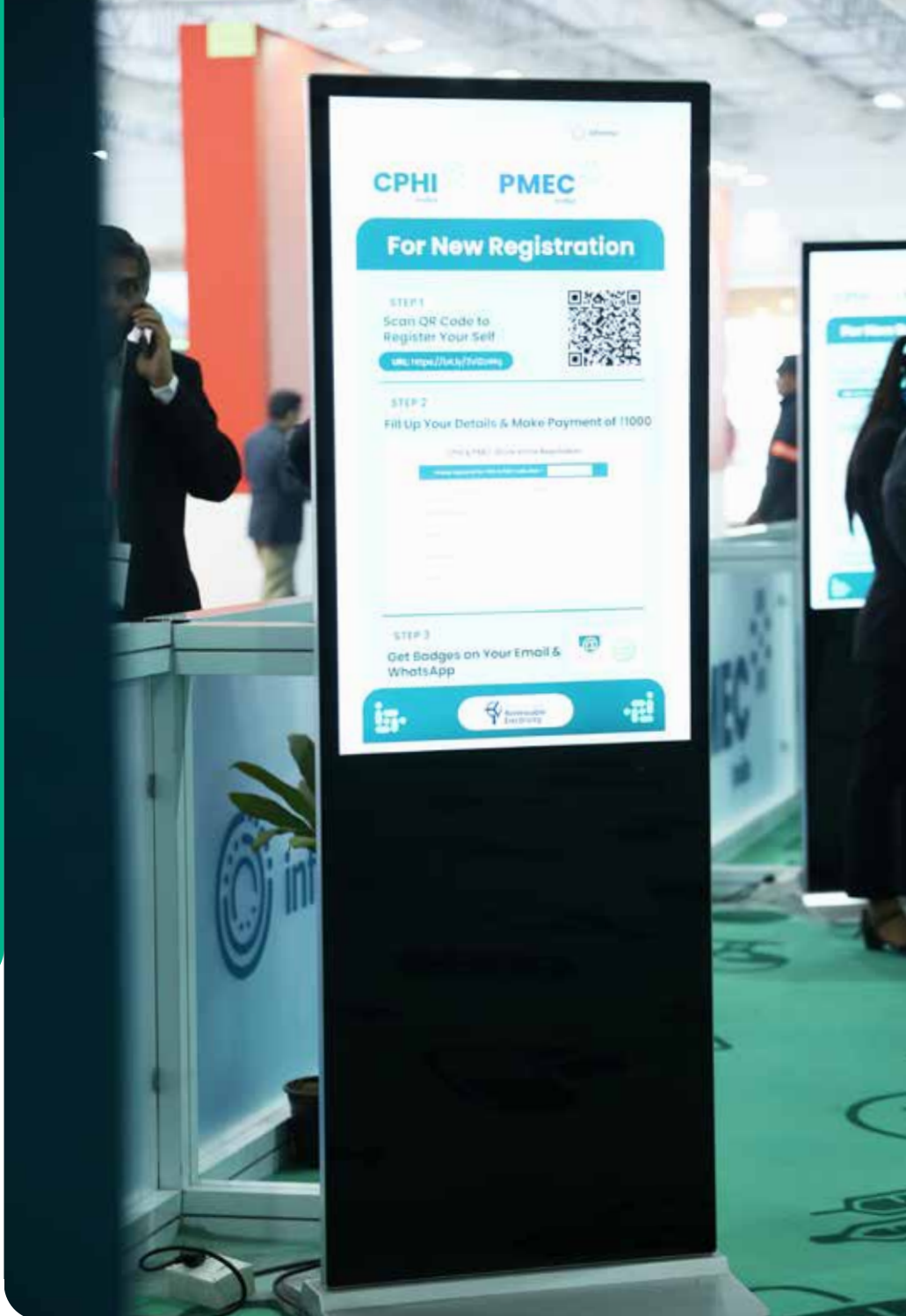
Imp Note: This image is for sample purposes only

DIGITAL ADVERTISING KIOSK

Description

Draw traffic to your booth by giving your company's message out through these digital advertising kiosks. To be placed at strategic locations of maximum attendee traffic area for optimum visibility.

LED Screen: 50 inch. Resolution 1080 x 1920
Cost: INR 1,00,000 / USD 1,250 per kiosk



SHUTTLE BRANDING



Description:

Frequent bus shuttles will be plying between Botanical Gardens, Greater Noida & India Expo Centre. These buses will offer pick up & drop to exhibitors, visitors, delegates, media, VIPs and any other attendees. This opportunity will provide you the visibility required to stand out from the crowd.

Size: H: 3' x W: 7'

Cost: INR 5,25,000 / USD 7,000 (Per Bus)

Digital Branding Opportunities

Join us!



CPHI TV PACKAGE

Description:

CPHI TV screens located at strategic locations at the venue guarantees exposure of your brand to the audience throughout the day for all 3 event days

- A two-minute scripted video / demo / corporate video played on CPHI TV (minimum three times a day)
- Still ads to be displayed (minimum three times a day)

Cost: INR 2,00,000 / USD 2,500





INFO HUB

Description

Info hubs are digital displays strategically positioned at numerous high-traffic points within the venue. These hubs allow visitors to easily access floor plans, lists of exhibitors, and details of events scheduled over the course of the three-day event. Your company logo and booth number will be prominently featured on the display screen, ensuring visibility that cannot be overlooked.

- Company logo and booth number on display screen
- Booth highlighted on interactive floor plan
- Booth highlighted on printed floor plan on-site

Qty: 10

Size: 16 x 9 Ratio

Cost: INR 4,00,000 + tax (across all screens)

USD 5,000 + tax

CFB LED WALL SIDE PANELS

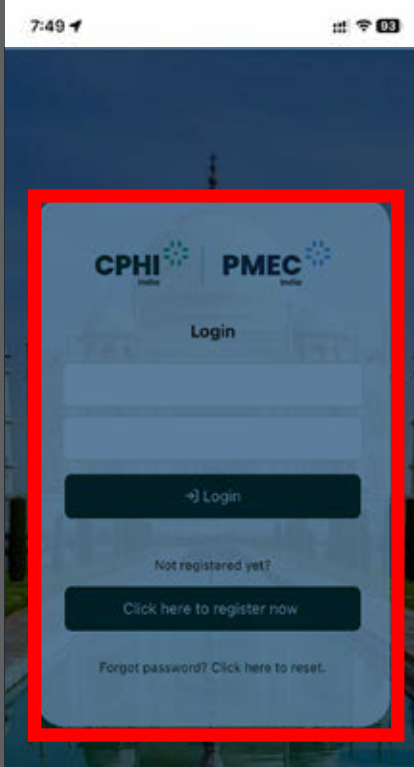


Description

Elevate your brand's presence at event with our captivating LED Wall branding! Command attention and leave a lasting impression on your audience as our dynamic LED panels deliver impactful visuals that reinforce your brand's message. Create an unforgettable experience that resonates with attendees and sets your brand apart from the crowd!.

Size: 16 x 9 Ratio

Cost: INR 6,00,000 + tax / USD 7,500 + tax



MOBILE APP BRANDING

Description

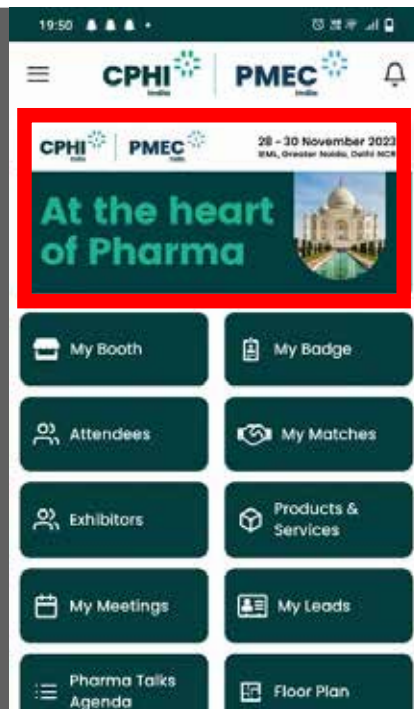
Login Page: Pop-Up Banner

Capture the attention of our user base with an exclusive advertising opportunity that guarantees visibility and impact. Our sponsored pop-up banner is the perfect way to promote your brand, product, or service to a highly targeted audience. The pop-up banner will appear the moment user clicks on CPHI India app even before logging in.

Imagine your brand being the first interaction users have upon entering the app, with eye-catching graphics and targeted messaging designed to resonate with our engaged audience.

Size: 552 X 720 pixels

Cost: INR. 3,50,000 / USD 4,375



Home Page Banner:

The home page banner is a visually engaging feature on our mobile application, designed to capture the attention of users immediately upon logging in the app. This banner offers sponsors an unparalleled opportunity for maximum visibility and engagement. By partnering with us, your brand can enjoy prominent exposure and become an integral part of our vibrant user experience, ensuring that your message stands out and drives significant interaction.

Size: 1082 X 480px

Cost: INR. 2,50,000 / USD 3,125

Video & Photography

Onsite Video & Photography Packages

CPHI 
India

PMEC 
India



Photography & Video Packages

Photography Package

PACKAGE 1

(25 edited photos) taken onsite during CPHI & PMEC India - Photo link provided 1 - week post-event (this can be a collection of edited photos (**team, booth, interactions, etc.**))

COST: INR 50,000 | USD 650

PACKAGE 2

25 (edited photos) taken onsite during CPHI & PMEC India - Photo link provided onsite at the end of the day (this can be a collection of edited photos of team, booth, interactions, etc.) for use by client for marketing purposes.

Additional 25 (edited photos) taken onsite during CPHI & PMEC India - Photo link provided 1 week post-event (this can be a collection of edited photos (**team, booth, interactions, etc.**))

Live promotion during the show days - 1 post per day ("visit stand #) posted on event social media channels and tagged with event hashtags.

COST: INR 75,000 | USD 1,000

Video Package

PACKAGE 1

1 x minute short video (testimonial, product pitch, company promotion, etc.) - edited by the team onsite and provided by end of the day for the client's own marketing purposes

Live promotion during the show days - 1 post per day ("visit stand #) posted on event social media channels and tagged with event hashtags.

COST: INR 80,000 | USD 1,050

PACKAGE 2

5 x minute audio visual (product, testimonial, company promotion, etc.) - edited on-site and provided to clients post show for their marketing purposes

1 x minute short video (testimonial, product pitch, company promotion, etc.) - edited by the team onsite and provided by end of the day for the client's own marketing purposes

Live promotion during the show days - 1 post per day ("visit stand #) posted on event social media channels and tagged with event hashtags.

COST: INR 1,50,000 | USD 1,950

Partnership Opportunities

Partnership For Progress

CPHI 
India

PMEC 
India



INDIA PHARMA AWARDS



Description:

IndiaPharma Awards will bring the CPHI audience together on the first night of the event to celebrate innovation across the pharma supply chain.

We have an exclusive sponsorship package available, which will guarantee significant exposure pre-show, during the event and post-show. A great opportunity to gain visibility for your brand in front of a captive, targeted audience and to align your organization with industry innovation.

A Unique Opportunity:

Headline sponsorship of the India Pharma Awards, a networking event for 300 attendees taking place at IEML on the first night of CPHI India

Boost Your Brand:

- Your organization's logo included wherever the India Pharma Awards is mentioned; including on-site signage, the India Pharma Awards website, in email campaigns promoting the awards, event write-ups, and social media posts.
- The India Pharma Awards is an exceptional PR opportunity. With prominent industry figures in attendance – attendees will include members of the Awards jury and stakeholders from across the industry.
- Invite your clients and partners – you'll receive 50 event passes to the event.
- Option to have a representative of your organization give a welcome speech at the Awards

Cost: INR 15,00,000 / USD 19,000

CEO ROUNDTABLE – INDIA PHARMA WEEK



Description

A closed-door CEO Roundtable has been eminently successful as a strategic gathering of CEOs of leading Pharma companies who deep dive into thought-provoking discussions on pharma developments in India.

PARTNERSHIP DELIVERABLES:

Pre Event Deliverables: Your Logo on Event Website

- Your description on the Event Website
- 2 Email Announcements with Company/Product specific details
- Your MD's Video testimonial on the Event Website.
- Your Company Web Banner on the CEO Roundtable website

During the Event Deliverables:

- Special reserved Seat for your MD at the Round table.
- RoundTable – Be a Part of the strategic discussion on the future of the Pharma Industry Space. In this closed doo meeting the experts will deep dive into critical areas of the pharma industry which will help curate an exclusive whitepaper to be published after the roundtable.
- Your logo on event branding

COST:

INR 10,00,000 / USD 12,500

POST EVENT DELIVERABLES:

- 1 page mention about your company in the White Paper
- Profile of your CEO in Whitepaper
- Video Bytes during the Event to be incorporated in our postshow

WOMEN IN PHARMA – INDIA PHARMA WEEK

Description

An initiative aimed at acknowledging and celebrating the significant and continued contribution of women to the pharmaceutical industry. The summit brings together women luminaries from the world of pharma, biopharma and life sciences.

PARTNERSHIP DELIVERABLES

Thought Leadership:

- 1. CHAIRING** – Your company will be represented by a senior level 'Chairperson' on both the days of the event and will open and close the conference, introduce keynote speakers and moderate the sessions through expert insights. The Chairperson's profile & credentials will be incorporated in the brochure cover page and will be a part of all direct mail, sales and on event promotional activities.
- 2. PRESENTATION SESSION** – You will be allocated 'one 20-minute session' on the conference agenda for a key spokesperson from your company to speak on a business related issue or a Case Study co-presentation with a client. Questions and answers can be moderated post these sessions. This session could be conducted on any of the conference day on topics within the agenda or as per your expertise and choice.

Networking:

- 1. Table Top Exhibit** – You will be allocated a prime space in the pre-conference area where you may set up a Table Top Exhibit (6ft x 4ft) for the entire length of the conference. This space will act as a focal point for your marketing initiatives, enabling you to centralize your networking, and demonstrate your products & services to the conference delegates.

- 2.** You will receive Six (6) Delegate Passes to the conference for clients, prospects or additional staff members.

Brand Recognition & Positioning:

- 1. Backdrop** – Your company logo will be positioned in the main podium backdrop throughout the main conference, workshop & Learning Lab thereby creating a strong visual presence in the event.
- 2.** You may strategically place your company standees in the, pre-conference area giving you a constant profile for the two days.
- 3.** You may also distribute your company brochures, highlighting the products and services offered by your organization as well as the contact details of your key people and provide us with material and literature that will be displayed at the venue.
- 4.** Your partnership will be acknowledged in on-site delegate booklet. Your company name, profile and website will be positioned EXCLUSIVELY on a separate partner acknowledgement page exclusive to the sponsors.

COST: INR 10,00,000 / USD 12,500



Contact Us

For partnership opportunities

CPHI: Shruti Save
E: Shruti.Save@informa.com
M: +91 97734 06628

PMEC: Sameer Matkar
E: Sameer.Matkar@informa.com
M: +91 98672 93605

For marketing enquiries

Dheeresh Bangera
E: Dheeresh.bangera@informa.com
M: +91 90040 21880

Mahesh Verma
E: mahesh.verma@informa.com
M: +91 74989 67629

